



Global Collaborative
centre for
Medical Countermeasures
GCMC

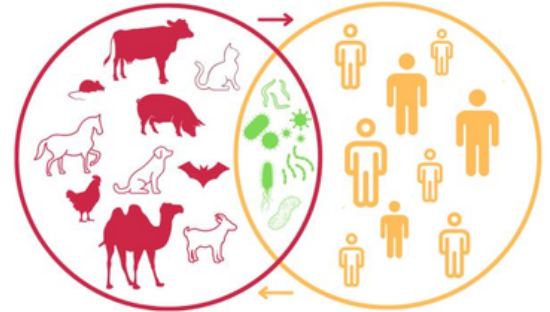
A TechInvention Initiative

Enabling One Health through Bio-innovation

The gap and our solution

The 21st century has witnessed a wave of infectious disease outbreaks, having devastating impact on lives across the globe. In the past seven decades, at least 250 zoonotic diseases have been identified, that are responsible for an estimated 2.5 billion cases of illnesses and 2.7 million deaths worldwide each year.

During the early days of the coronavirus disease 2019 (COVID-19) pandemic, diagnostic kits, repurposed treatments, and vaccines were made accessible rather soon, because of solid foundation of rapid genomic sequencing. Despite these breakthroughs, millions of lives were lost, with long-term consequences for health systems and well-being.



Going forward, health experts have warned that a new, unidentified pathogen, referred to as 'Disease X,' has the potential to trigger a severe international epidemic, possibly causing 50 million deaths, which would be 20 times more lethal than the COVID-19 pandemic.

Medical countermeasures (MCMs)

The '100 Days Mission', a CEPI initiative, was endorsed by the G7 and G20 in 2021, with the aim of focusing attention on efficient and equitable preparation for future disease outbreaks. MCMs are broad spectrum of medical assets (encompassing vaccines, diagnostics, and therapeutics), which can play a pivotal role in blunting the morbidity and mortality during public health emergencies, thereby enabling pandemic preparedness.

WHO's call to action

Given the shift in the global response to pandemic preparedness, WHO's call to the industry is to:

- 1 **Align activities with WHO's guidance to focus on R&D of priority pathogens**
- 2 **Facilitate technology transfers and ensure transparency along the value chain**
- 3 **Take a tailored approach to enable a more equitable distribution of products**

Our solution

TechInvention Lifecare Pvt. Ltd. distinguishes itself as a unique Indian startup, supporting the 'One Health' concept by integrating three pivotal interventions: diagnostics, vaccines, and biotherapeutics, catering to both human and veterinary sectors.

To address WHO's call to action and CEPI's 100 days mission, TechInvention is setting up a 'Global Collaborative Centre for Medical Countermeasures (GCMC)', a state-of-the-art biotech facility dedicated to translational research and development, as well as manufacturing of MCMs encompassing these three interventions.

The center that is strategically located at Navi Mumbai, a meticulously planned city adjacent to Mumbai, India's financial powerhouse, will be home to a comprehensive infrastructure that will collectively facilitate the rapid and compliant production of vaccines, diagnostics, and biotherapeutics while protecting IP and ensuring adherence to global regulatory standards.



GCMC infrastructure

GCMC - From strain-to-supply

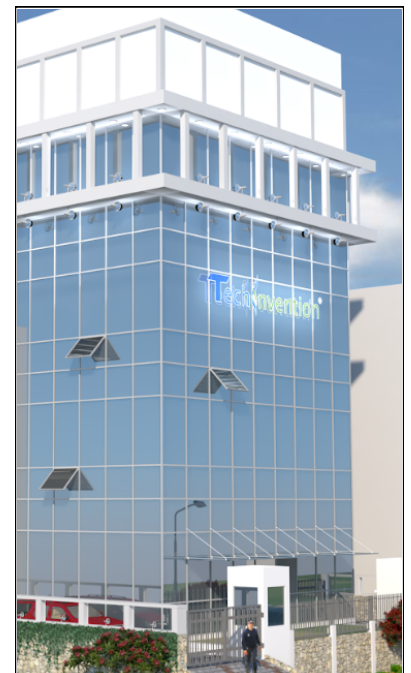
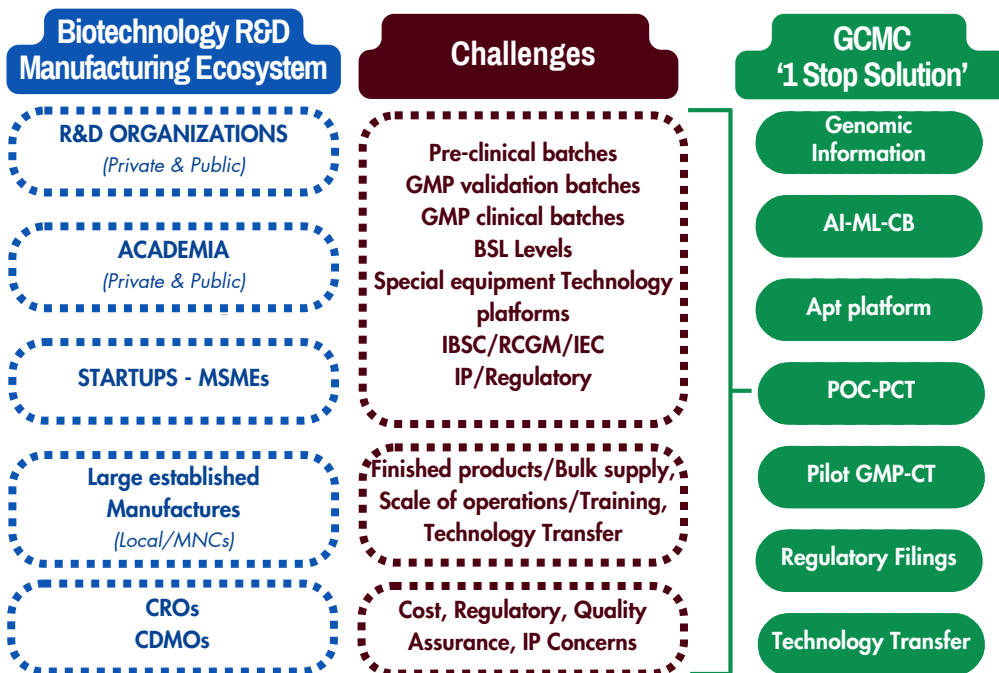
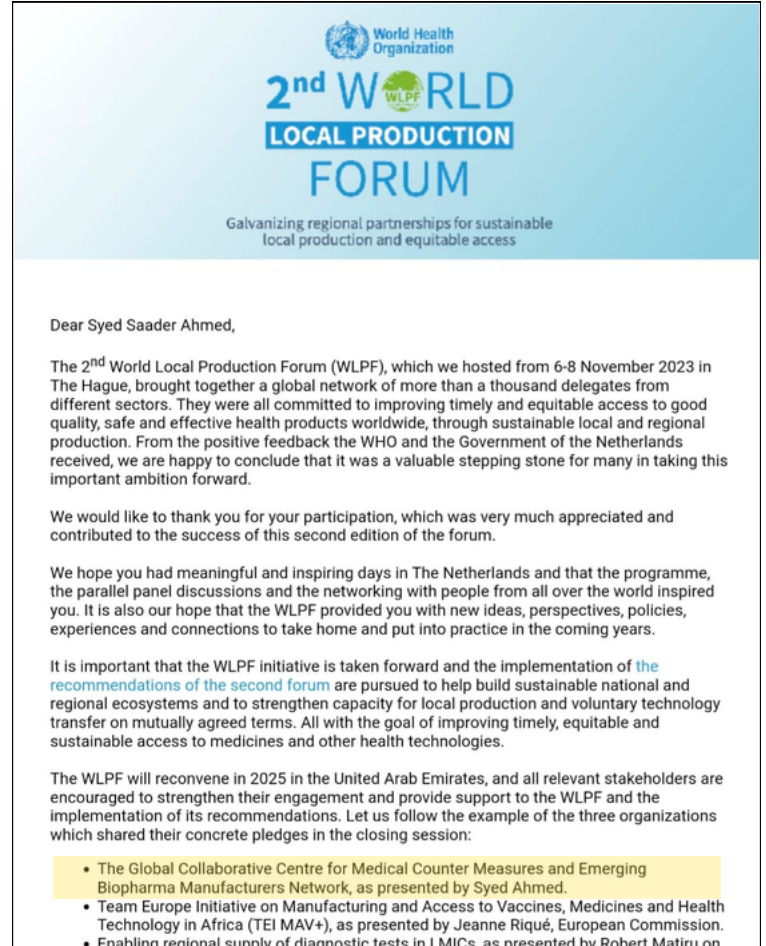
GCMC, acknowledged for its global significance at the World Local Production Forum organized by the World Health Organization, stands as a testimony to TechInvention's strategic foresight and global impact with its commitment to innovative biosolutions.

This establishment will serve the needs of both public and private organizations, such as academic institutes, start-ups, MSMEs and R&D organizations to provide a comprehensive ecosystem, facilitating transition from basic R&D to pilot-GMP-scale production for pre-clinical/clinical batches.

GCMC's key features will enable the center to cater to the entire cycle of biologics development, from strain-to-supply.

Key features

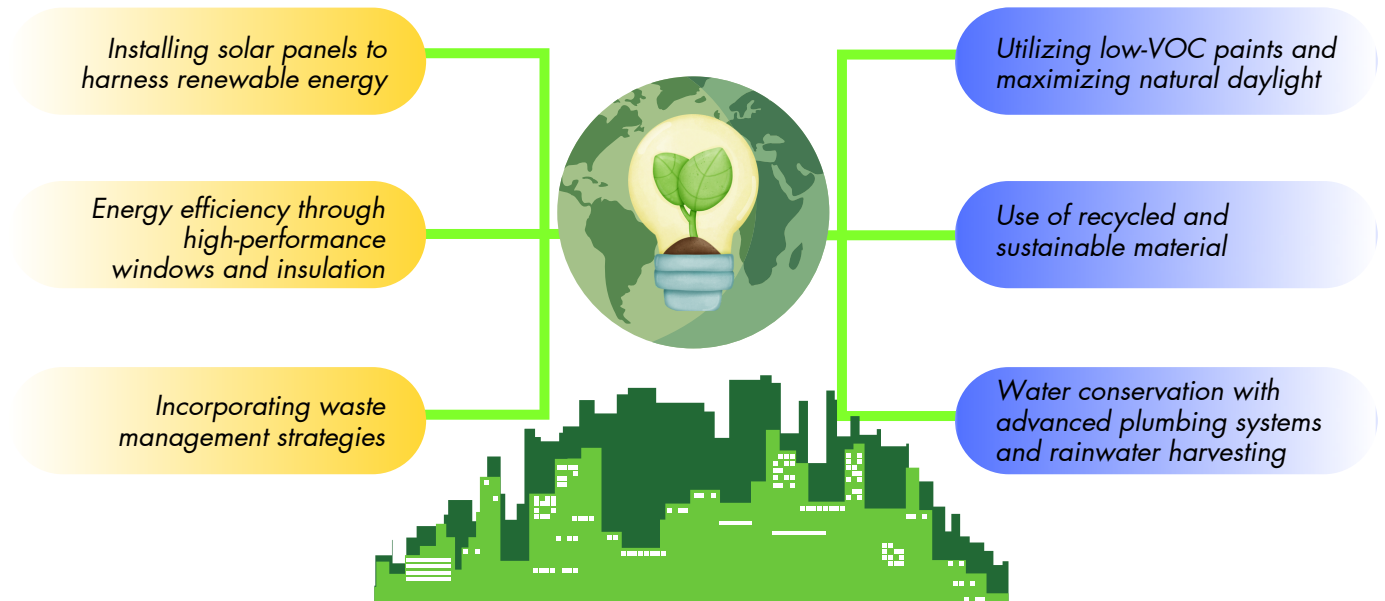
- ✓ BSL-1/2 labs for accelerated R&D work
- ✓ Bioinformatics facilities
- ✓ GMP facility for vaccines and biologics
- ✓ IP and regulatory support for necessary approvals
- ✓ QC and QA labs to support early scale-up
- ✓ Logistics and supply chain team



Our commitment to sustainability

As an organization, we are committed to bringing greater health equity to people and nations all over the world. We recognize the privilege of the role we can play in improving healthcare in emerging and developing regions, especially at the grassroots level.

Our 'Going Green' initiative prioritizes making all of our operations more environment friendly. This demonstrates our commitment to a more sustainable future and helps build a healthier working environment.

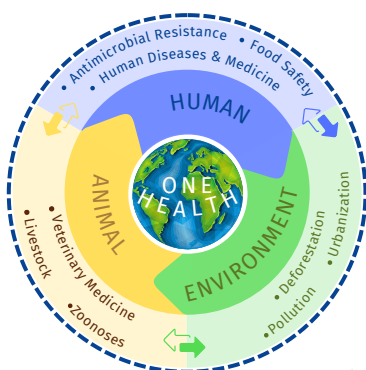


We believe in bringing life to years, not just years to life!

GCMC is envisioned to be a centre par excellence for independent researchers, academia, and industry to collaborate and enable translational research, development, and commercial-scale manufacture of high-priority MCMs.

It will stand as a beacon of hope where science, innovation, and collaboration converge to counter the looming crisis of prevailing, emerging, and re-emerging infectious diseases.

'Together...Lets Collaborate to Accelerate'



healthequity4all



TechInventionL



TechInventionL



connect@techinvention.biz



www.techinvention.biz



+91-22-40052123



Enabling One Health through Bio-innovation